

Anti-RanBP2 (human) antibody, rabbit serum

71-003 100 ul

RanBP2 was identified as a protein that interacts with small GTP-binding protein, Ran, and forms a large multiprotein complex involved in many biological processes such as mRNA processing, nuclear transport, cell cycle control and postmitotic nuclear reassembly. The protein is identified by Western blotting as an apparent molecular mass of 360 kD (see below). It is involved in nucleation of microtubules and controls of cell growth by interacting with many protein factors.

Applications

1. Western blotting (~ x 1,000 dilution)
2. Immunoprecipitation
3. Indirect immuno-staining of RanBP2 in cells

Specification

Immunogen: synthetic peptide corresponding to 3 times-repeated sequences in RanBP2;
SKAPKSGFEGMFTKKE

Form: Undiluted antiserum added with 0.09% sodium azide

Reactivity: human, mouse and rat. Not tested for other species.

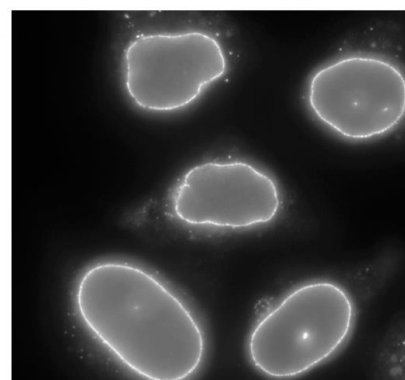
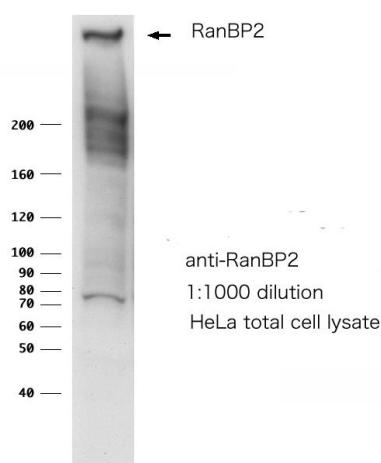
Storage: Shipped at 4°C or -20°C, and upon arrival, aliquot and store at -20°C.

Data Link UniProtKB/Swiss-Prot [P49792](#) (RBP2_HUMAN)

Reference This product has been used for the following reference.

Yokoyama N *et al*"A giant nucleopore protein that binds Ran/TC4" *Nature* **376**:184-188 (1995) PMID:
[7603572](#)

Full size RanBP2 cDNA will be available upon request: 71-003-1 pBluescript KS(+)-RanBP2 cDNA



Para formaldehyde fixed HeLa cells
stained with anti RanBP2 (551-2)
(1:2000 dilution)